



EASTAR
www.polyesterscreenmesh.com



FLOUR MILL MESH

For Plansifter, Purifiers & Centrifugal sifters

- *Nylon Monofilament Mesh*
- *Stainless Steel Woven Mesh*

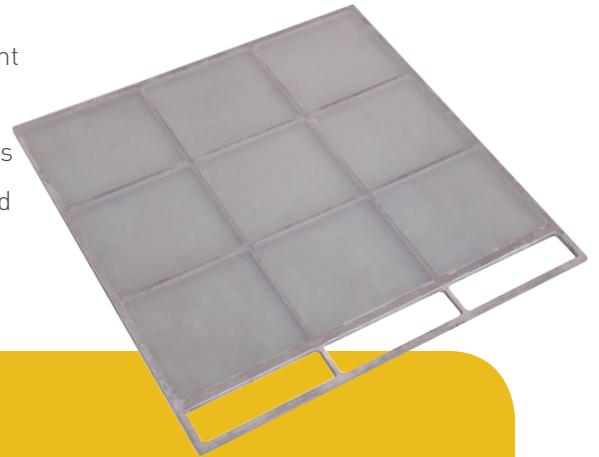


PA, PET & SS Flour Mill Mesh

Flour mill mesh is widely used in the mill industries for food sieving, screening and filtering.

It is made of non-metallic nylon or polyester monofilament yarns or stainless steel yarns. Simple but stable structure can ensure the long lifespan and excellent screening performance for different screening materials and fineness.

Flour mill mesh can be made into pieces, tubes, and other shapes to fit different sieving machines, including plansifter, purifiers and centrifugal sifters.



Available Types

Nylon & Polyester type

- **Milling series.** For soft wheat and rye
- **XXX series.** For medium to hard wheat and high capacity sifters
- **GG series.** For gritting gauze for coarse and scalping sieves.

Metal mesh type

- **Stainless steel filter mesh.**



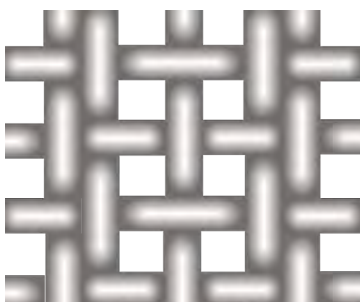
Nylon mesh



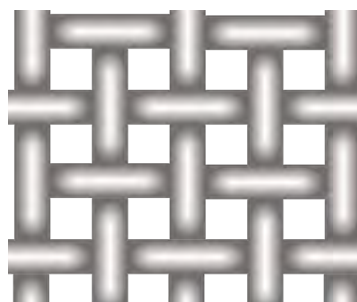
Polyester mesh



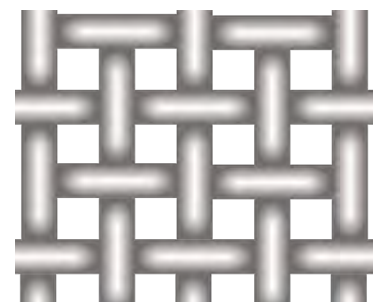
Stainless steel mesh



Milling Series



GG Series



XXX Series

Mesh Fabrics Properties

Item	PA-Nylon	PET-Polyester
Abrasion resistance	Very good	approx. 2/3of PA
Water absorption	4.4%	0.4%
Benefit of the fabric	Long life time	Less influence in humidity changes
Hydrolysis resistance	good	limited
Fabric surface structure	standard	Slightly rougher
Stability to light	limited	limited
Fabric range	3 different fabric ranges for your sifter (GG, Milling, XXX)	One complete GG program for your purifier

Mesh Fabrics Performance in Different Machines

Flour Mill Mesh	Sifters	Centrifugal Sifters	Purifiers	Area of Use	Main Benefit	Standard Use for
PA-GG	X	X		Coarse sifter covers	Anti abrasive qualities	Coarse Sieve
PA-Milling	X			soft wheat,biscuit and rye flour	High efficiency	Flour Sieves
PA-XXX	X	X		Durum and hard wheat flour	Long life time	
PET-GG			X	Purifier covers	Constant tension	

Advantages

- Accord with FDA standard.
- Wide ranges of materials and mesh counts for options.
- Available for different models of sieving & milling equipment.
- Stable structure for long lifespan.
- Efficient milling performance for flour production.
- Excellent Tear Resistance.
- Excellent Dimensional Stability.
- Higher Tension Strength & Break Point.
- Low Elongation.



Applications

- Plansifter.
- Purifiers.
- Centrifugal sifters
- Other powder filtering



Dimensions

- **Material:** polyamide6 (PA6) and polyamide66 (PA66).
- **Weaving method:** plain weave.
- **Roll width:** 105/115/136/158 cm or customized sizes.
- **Roll length:** 30–80 m or customized sizes.
- **Tailored service:** cut into pieces/discs, sewing or welding tubes, belts or ribbons.

GG Series Flour Mill Mesh

Item	Mesh Opening	Thread diameter	Thread Count		Open Area	Weight
	(µm)	(µm)	mesh/cm	mesh/inch	(%)	(g/m ²)
10GG	2000	550	3.9	9.9	61.5	237.3
12GG	1800	450	4.4	11.2	64	180
14GG	1600	400	5	12.7	64	177.8
15GG	1400	400	5.6	14.2	60.5	197.5
16GG	1300	350	6.1	15.5	62.1	165
18GG	1188	350	6.5	16.5	59.7	177
19GG	1080	350	7	17.8	57	190.4
20GG	1000	300	7.7	19.6	59.2	153.8
22GG	950	300	8	20.3	57.8	160
24GG	850	300	8.7	22.1	54.6	173.9
26GG	800	300	9.1	23.1	52.9	181.8
27GG	750	250	10	25.4	56.3	138.9
28GG	710	250	10.4	26.4	54.7	144.7
30GG	670	250	10.9	27.7	53	151
31GG	610	250	11.6	29.5	50.3	161.5
32GG	600	250	11.8	30.0	49.8	163.4
34GG	560	220	12.8	32.5	51.5	137.9
36GG	530	220	13.3	33.8	49.9	143.4
38GG	500	220	13.9	35.3	48.2	149.4
40GG	475	200	14.8	37.6	49.5	131.7
42GG	450	200	15.4	39.1	47.9	136.8
44GG	425	200	16	40.6	46.2	142.2
45GG	400	180	17.2	43.7	47.6	124.1
47GG	375	180	18	45.7	45.7	129.7
50GG	355	150	19.8	50.3	49.4	99
52GG	335	150	20.6	52.3	47.7	103.1
54GG	315	150	21.5	54.6	45.9	107.5
56GG	308	150	21.8	55.4	45.2	109.2
58GG	300	150	22.2	56.4	44.4	111.1
60GG	280	150	23.3	59.2	42.4	116.3
62GG	275	150	23.5	59.7	41.9	117.6
64GG	265	150	24.1	61.2	40.8	120.5
66GG	250	120	27	68.6	45.7	86.5
68GG	243	120	27.5	69.9	44.8	88.2
70GG	236	120	28.1	71.4	43.9	89.9
72GG	224	120	29.1	73.9	42.4	93
74GG	212	120	30.1	76.5	40.8	96.4

Milling Series Flour Mill Mesh

Item	Mesh Opening	Thread Diameter (warp/weft)	Wire Diameter (warp/weft)		Open Area	
	(µm)	(µm)	mesh/cm	mesh/inch	(%)	
3M	300	100 + 2 × 60	100	24/25	61/64	54
4M	280	100 + 2 × 60	100	25.5/26.5	65/67	53
5M	250	100 + 2 × 60	90	27.5/29	70/74	51
6M	212	90 + 2 × 60	80	32/30	81/76	49
7M	200	80 + 2 × 60	80	33.5/35.7	85/91	48
8M	180	80 + 2 × 60	70	35.7/40	91/102	46
8.5M	160	70 + 2 × 60	70	40/43.5	102/111	44
9M	150	70 + 2 × 60	60	42.5/47.6	108/121	44
9.5M	140	60 + 2 × 60	60	43/50	109/127	43
10M	132	60 + 2 × 50	60	47/52	119/132	44
10.5M	125	60 + 2 × 50	60	48.5/54	123/137	40
11M	118	60 + 2 × 50	50	50.5/59.5	128/151	42
12M	112	60 + 2 × 50	50	51.5/61.5	131/156	40
12.5M	106	60 + 2 × 43	50	56/64	142/163	38
13M	100	60 + 2 × 50	50	57/66.7	145/169	38
14M	95	50 + 2 × 43	50	61/69	155/175	38
14.5M	90	50 + 2 × 43	50	62.5/71.5	159/182	37
15M	85	50 + 2 × 43	50	65/74	165/188	34
17M	80	50 + 2 × 43	44	68/81	173/206	35
20M	75	50 + 2 × 43	44	70/84.7	178/215	34
21M	71	50 + 2 × 43	44	74/87.7	188/223	33
25M	63	43 + 2 × 43	44	78/94	198/239	30

XXX Series Flour Mill Mesh

Item	Mesh Opening	Thread Diameter	Thread Count		Open Area
	(µm)	(µm)	Mesh/cm	mesh/inch	(%)
3XXX	301	140	22.7	57.6	47
4XXX	280	140	23.8	60.5	44
5XXX	257	120	26.5	67.3	47
6XXX	213	120	30	76.2	41
7XXX	203	120	31	78.74	39
8XXX	182	100	35.5	90.17	42
8.5XXX	163	100	38	96.52	38
9XXX	154	90	41	104.14	40
9.5XXX	143	90	43	109.22	38
10XXX	133	80	47	119.38	39
10.5XXX	124	80	49	124.46	37
11XXX	120	80	50	127	36
12XXX	112	70	55	139.7	38
12.5XXX	105	70	57	144.78	36
13XXX	99	70	59	149.86	34
14XXX	97	70	60	152.4	34
15XXX	92	60	66	167.64	36
16XXX	95	50	69	175.26	43
17XXX	91	50	71	180.34	42

Stainless Steel Flour Mill Mesh

Item	Mesh Opening	Thread Diameter	Wire Diameter (warp/weft)		Open Area
	(μ m)	(μ m)	mesh/cm	mesh/inch	(%)
SS-2000/74	2000	320	4.3	11	74
SS-1800/72	1800	320	4.7	12	72
SS-1600/77	1600	220	5.5	14	77
SS-1400/74	1400	220	6.2	15.7	74.5
SS-1250/72	1250	220	6.8	17.3	72
SS-1180/71	1180	220	7.1	18.1	71
SS-1120/69	1120	220	7.5	19	69.4
SS-1060/68	1060	220	7.8	19.8	68.6
SS-1000/67	1000	220	8.3	21	67
SS-950/68	950	200	8.7	22	68.2
SS-900/67	900	200	9.1	23	67
SS-850/65	850	200	9.4	24	65.5
SS-800/64	800	200	9.8	25	64
SS-750/65	750	180	10.6	27	65
SS-710/64	710	180	11.4	29	64
SS-670/65	670	160	12.2	31	65.2
SS-630/64	630	160	12.6	32	64
SS-600/62	600	160	13.0	33	62.3
SS-560/60	560	160	13.8	35	60
SS-530/59	530	160	14.6	37	59
SS-500/57	500	160	15.0	38	57.6
SS-475/56	475	160	15.7	40	56
SS-450/57	450	140	16.9	43	57.6
SS-425/56	425	140	17.7	45	56.6
SS-400/54	400	140	18.5	47	54
SS-375/53	375	140	19.3	49	53
SS-355/51	355	140	20.1	51	51
SS-335/49	335	140	20.9	53	49.7
SS-315/54	315	112	23.2	59	54
SS-300/53	300	112	24.4	62	53
SS-280/51	280	112	25.6	65	51
SS-265/53	265	100	27.6	70	52.8
SS-250/53	250	100	28.7	73	53
SS-245/62	245	65	32.3	82	62
SS-236/51	236	100	29.9	76	51
SS-224/49	224	100	30.7	78	49
SS-212/49	212	90	33.1	84	49
SS-180/45	180	90	37.0	94	45
SS-160/46	160	75	41.0	105	46
SS-140/46	140	67	47.2	120	46
SS-132/49	132	65	53.1	135	49
SS-125/48	125	56	55.1	140	48
SS-106/36	106	50	64.2	163	46



EASTAR FILTER INDUSTRY CO., LIMITED

Add:

NO.15, Jing 5 Road, East
Industrial Zone, Anping
County, Hebei, China.

Tel:

+86-318-8090100

Fax:

+86-318-8090101

Website:

www.polyesterscreenmesh.com

E-mail:

sales@polyesterscreenmesh.com